

Social Determinants of Health (SDoH) Member Identification and Reporting

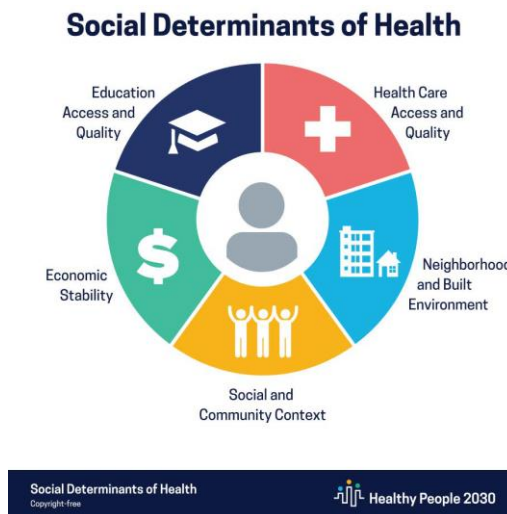
Social determinants of health (SDoH) are conditions in the places where people are born, live, learn, work, worship and play that affect a wide range of health risks and health outcomes.ⁱ

There are ICD-10 codes that can be submitted with claims to help McLaren Health Plan (MHP) identify members who have social determinants of health needs. These code categories include:

Code	Category
Z55	Problems related to education and literacy
Z56	Problems related to employment and unemployment
Z57	Occupational exposure to risk factors
Z59	Problems related to housing and economic circumstances
Z60	Problems related to social environment
Z62	Problems related to upbringing
Z63	Other problems related to primary support group, including family circumstances
Z64	Problems related to certain psychological circumstances
Z65	Problems related to other psychological circumstances
Z75	Problems related to medical facilities and other health care
Z77	Contact with/suspected exposure to hazardous substances

MHP uses z-codes submitted on claims by providers to identify members with SDoH needs. When SDoH needs are identified, MHP's case management team is able to connect with the member and deploy needed community resources, including a Community Health Worker when appropriate.

As a care provider, you play an important role in helping identify members who may need additional support beyond medical care. You can help by including appropriate SDoH diagnosis codes with your claims. You can also request a Case Manager for one of our members by contacting Customer Service or by faxing a referral form located here: <https://www.mclarenhealthplan.org/Uploads/Public/Documents/HealthPlan/documents/Provider%20Forms/Referral%20to%20Case%20Management.pdf>.



ⁱ Office of Disease Prevention and Health Promotion, October 11, 2018, Healthy People 2020 - Social Determinants of Health, <https://www.healthypeople.gov/2020/topics-objectives/topic/social-determinants-of-health>

Social Determinants of Health ICD-10 Codes

Problems related to education and literacy

Z55.0	Illiteracy and low level literacy
Z55.1	Schooling unavailable and unattainable
Z55.3	Underachievement in school
Z55.4	Education maladjustment and discord with teachers and classmates
Z55.9	Problems related to education and literacy, unspecified

Problems related to employment and unemployment

Z56.0	Unemployment, unspecified
Z56.1	Change of job
Z56.2	Threat of job loss
Z56.3	Stressful work schedule
Z56.4	Discord with boss and workmates
Z56.5	Uncongenial work environment
Z56.81	Sexual harassment on the job
Z56.82	Military deployment status
Z56.9	Unspecified problems related to employment

Occupational exposure to risk factors

Z57.0	Occupational exposure to noise
Z57.1	Occupational exposure to radiation
Z57.2	Occupational exposure to dust
Z57.3	Occupational exposure to other air contaminants
Z57.4	Occupational exposure to toxic agents in agriculture
Z57.5	Occupational exposure to toxic agents in other industries
Z57.6	Occupational exposure to extreme temperature
Z57.7	Occupational exposure to vibration

Problems related to housing and economic circumstances

Z59.0	Homelessness
Z59.1	Inadequate housing
Z59.2	Discord with neighbors, lodgers and landlord
Z59.3	Problems related to living in residential institutions
Z59.4	Lack of adequate food and safe drinking water
Z59.5	Extreme poverty
Z59.6	Low income
Z59.7	Insufficient social insurance and welfare support
Z59.8	Other problems related to housing and economic circumstances
Z59.9	Problems related to housing and economic circumstances, unspecified

Problems related to social environment

Z60.0	Problems of adjustment to life-cycle transitions
Z60.2	Problems related to living alone
Z60.3	Acculturation difficulty
Z60.4	Social exclusion and rejection
Z60.5	Target of (perceived) adverse discrimination & persecution
Z60.8	Other problems related to social environment
Z60.9	Problems related to social environment, unspecified

Problems related to upbringing

Z62.0	Inadequate parental supervision and control
Z62.1	Parental overprotection
Z62.2	Upbringing away from parents
Z62.21	Child in welfare custody
Z62.22	Institutional upbringing
Z62.3	Hostility towards and scapegoating of child
Z62.6	Inappropriate (excessive) parental pressure
Z62.8	Other specified problems related to upbringing
Z62.81	Personal history of abuse in childhood
Z62.812	Personal history of neglect in childhood
Z62.819	Personal history of unspecified abuse in childhood
Z62.82	Parent-child conflict
Z62.891	Sibling rivalry

Other problems related to primary support group, including family circumstances

Z63.3	Absence of family member
Z63.4	Disappearance and death of a family member
Z63.5	Disruption of family by separation and divorce
Z63.6	Dependent relative needing care at home
Z63.7	Other stressful life events affecting family & household
Z63.71	Stress on family due to return of family member from military deployment
Z63.72	Alcoholism and drug addiction in family

Problems related to certain psychological circumstances

Z64.0	Problems related to unwanted pregnancy
Z64.1	Problems related to multiparity
Z64.4	Discord with counselors

Problems related to other psychological circumstances

Z65.0	Conviction in civil and criminal proceedings without imprisonment
Z65.1	Imprisonment and other incarceration
Z65.2	Problems related to release from prison
Z65.3	Problems related to other legal circumstances
Z65.4	Victim of crime and terrorism
Z65.5	Exposure to disaster, war and other hostilities

Problems related to medical facilities and other health care

Z75.3	Unavailability & inaccessibility of health care facilities
Z75.4	Unavailability & inaccessibility of other helping agencies

Contact with/suspected exposure to hazardous substances

Z77.011	Contact with and suspected exposure to lead
Z77.090	Contact with and suspected exposure to asbestos

American Hospital Association. ICD-10-CM Coding for Social Determinants of Health. Nov. 2019, www.aha.org/system/files/2018-04/value-initiative-icd-10-code-social-determinants-of-health.pdf

McLaren Health Plan now offers members access to free or reduced-price social services all in one place. This online program connects people in need with programs and services that can help. This free service, available at www.GetHelp.McLaren.org, or through the member portal, is open to all lines of business. It's easy to use and provides the capability to connect members to programs and services by ZIP code, program type, and other search criteria.